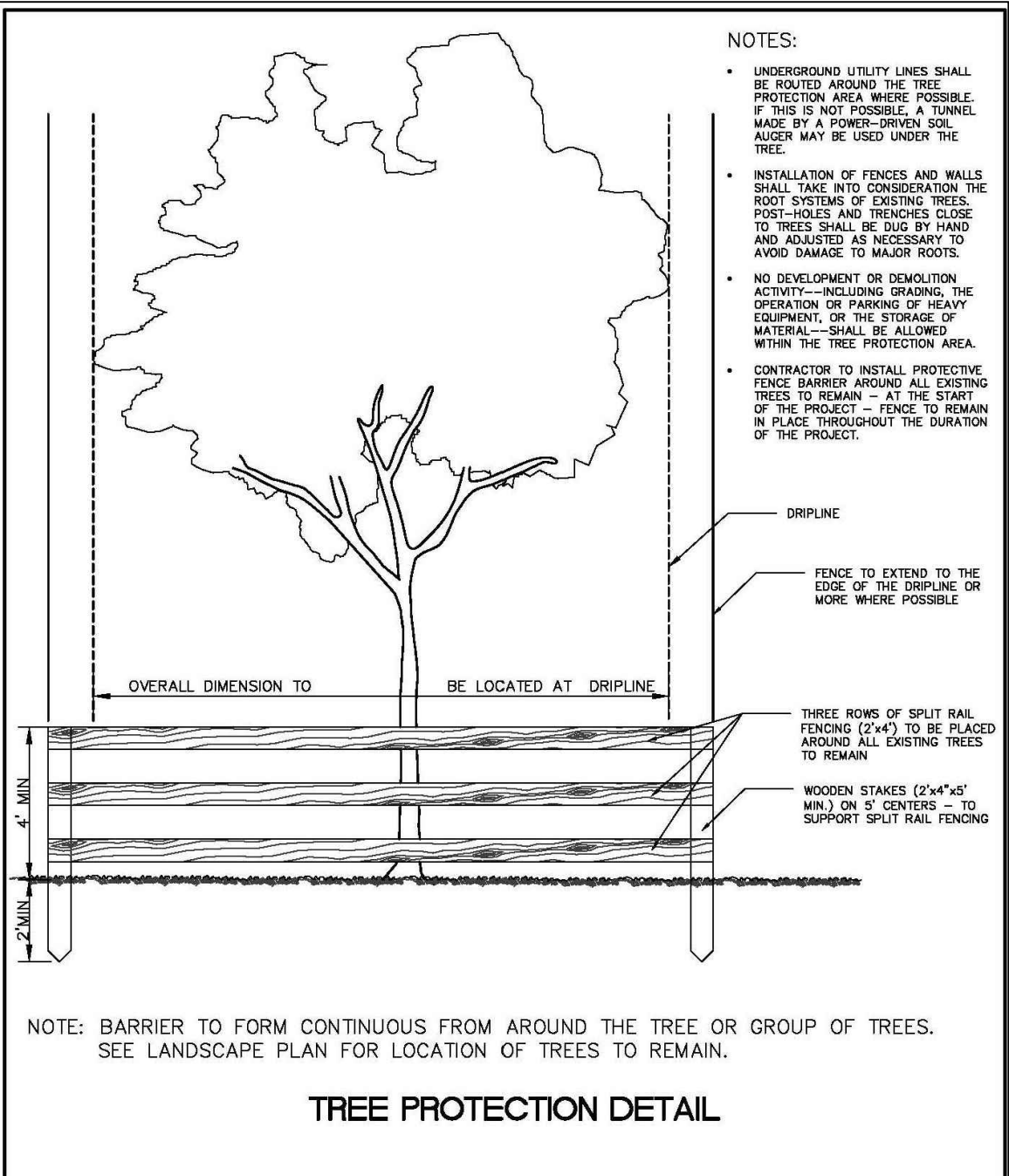
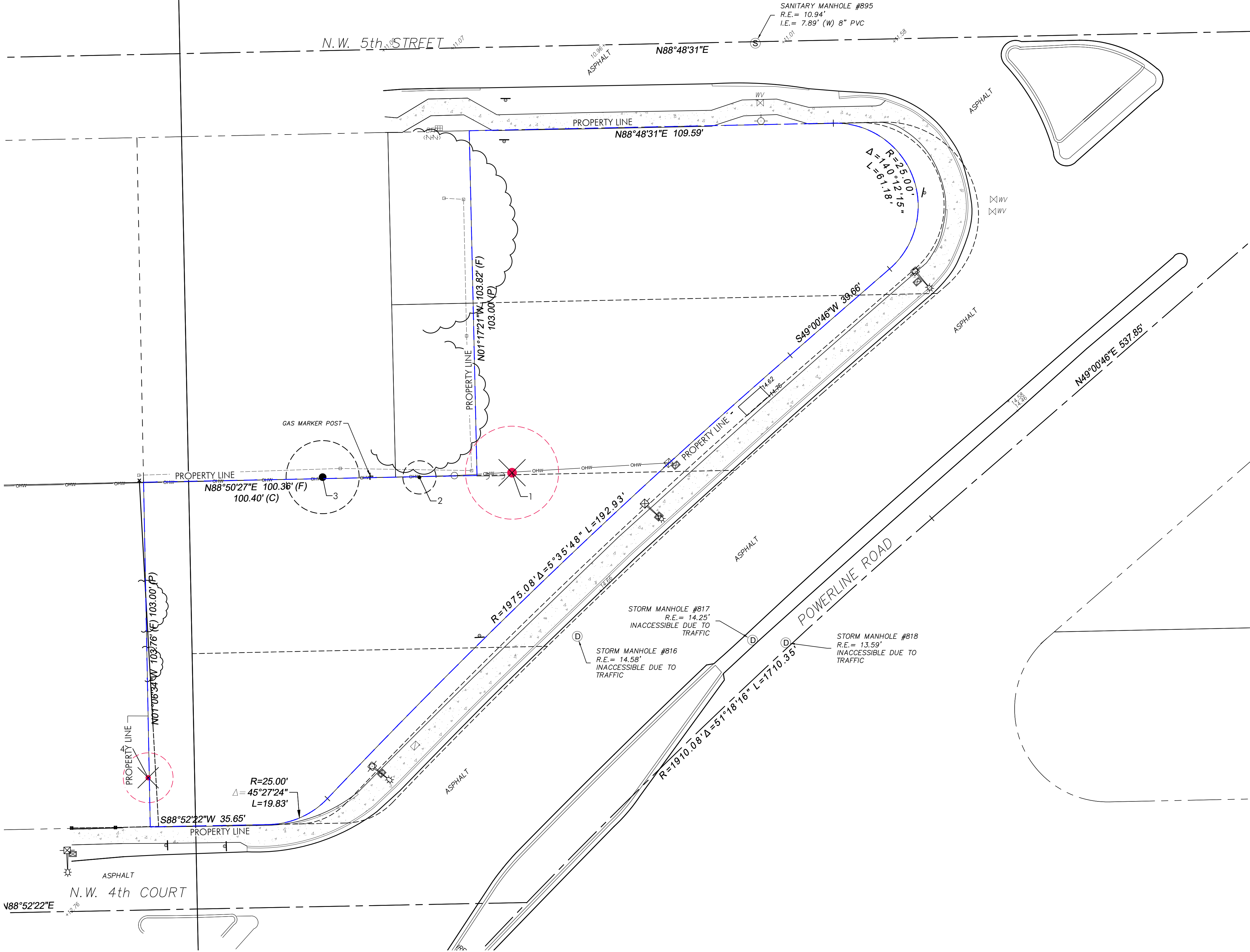


GARDNER + SEMLER
LANDSCAPE ARCHITECTURE
WWW.GSLADDESIGN.COM

17670 NW 78th AVE., SUITE 214
MIA MI, FL 33015
P 305.392.1016 F 305.392.1019
CORP. ID# 0000266

This drawing is the property of GSLA Design and is not to be reproduced or copied in whole or part without written permission. It is not to be used on any other project and is to be returned on request. Contractor is responsible for verifying all site conditions prior to proceeding with work.
COPYRIGHT © 2020



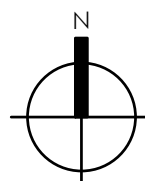
REVISIONS		LANDSCAPE STANDARDS	
BY	DATE	URBAN FORESTRY CITY OF POMPANO BEACH	TREE PROTECTION DETAIL
TCW	04/2010		
AS	09/2021		
SCALE: N.T.S.		APPROVED BY: URBAN FORESTER	DATE: SEP 2021 DWG. NO. 104-1

EXISTING TREE DISPOSITION LIST											
KEY	COMMON NAME	SCIENTIFIC NAME	DBH. (in.)	SIZE HT. (ft.)	SPD. (ft.)	HEALTH (%)	SPECIMEN ?	TREE DISPOSITION	REMOVAL (MITIGATION)	APPRAISAL VALUE	COMMENTS
1	Earleaf Acacia	*Acacia auriculiformis	28			0%		Remove	n/a - Invasive	n/a	
2	Sabal Palm	Cabbage Palm	17			90%		Remain		\$495.00	
3	Strangler Fig	Ficus aurea	44			75%	Yes	Remain		\$2,839.00	
4	Carrotwood	*Cupaniopsis anacardioides	4			0%		Remove	n/a - Invasive	\$0.00	
*As updated based on the FLORIDA CHAPTER 15A DETERMINING THE MITIGATION VALUE OF ROADSIDE VEGETATION (FLORIDA RULE 14-10.037)											

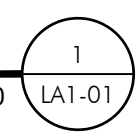
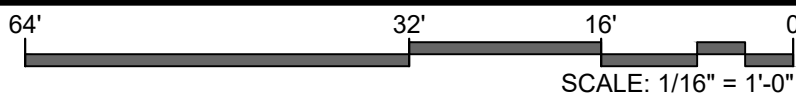
*Appraised based on the FLORIDA CHAPTER ISA DETERMINING THE MITIGATION VALUE OF ROADSIDE VEGETATION (FLORIDA RULE 14-10.057)

TREE DISPOSITION SUMMARY				MITIGATION VALUE	SHORTFALL
TOTAL TREES TO REMAIN	0	-	-	-	-
TOTAL TREES TO REMOVE	1	-	-	-	-
TOTAL TREES TO RELOCATE	0	-	-	-	-
TOTAL TREES TO RELOCATE	0	-	-	-	-
TOTAL TREES TO REMOVE	1	n/a - Invasive	-	-	-
TOTAL TREES TO REMOVE	1	n/a - Invasive	-	-	-
TOTAL TREES TO REMOVE	0	-	-	-	-

PZ25-12000012
12/03/2025



EXISTING TREE DISPOSITION PLAN



BIG TREE BBQ
N POWERLINE RD
POMPANO BEACH, FL

REV.	

TITLE
EXISTING TREE
DISPOSITION
PLAN

Ken Gardner Karl Semler		FLA #1569 FLA #6667205
DATE	8.26.2025	
SCALE	as noted	
SHEET	LAT-01	